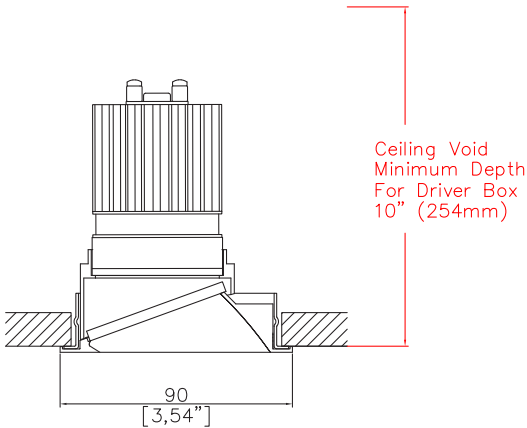


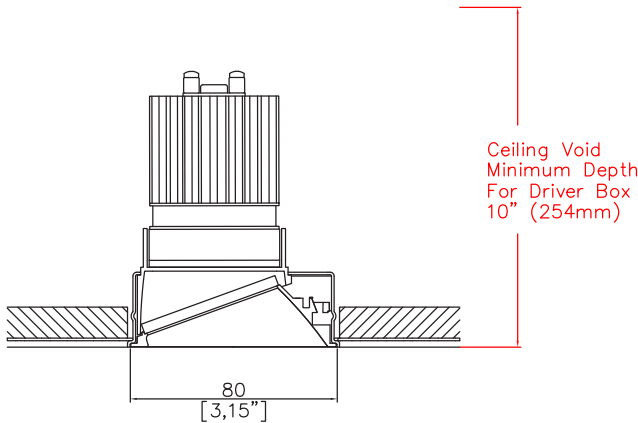
EasyFit PlusMini Wallwash



3.54" (90mm) overall flange diameter. 3.15" (80mm) overall trimless diameter. Available with a seperate installation kit with overlap flange or mud-in kit for seamless flush finish. Fixed and adjustable version available. Supplied with a remote driver box and a plug and play tethered power supply.



A750+LED-WW-TR
Cut-out Ø 3.23" (Ø 82mm)



A750+LED-WW-PC
Cut-out Ø 3.23" (Ø 82mm)

LED Source	ALED51/Q-HO
CCT	3000K
Drive Current	350mA
Power inc Driver	14.0W
Beam Angle	WFL
Delivered Lumens	976
Delivered Intensisty cd	1049
Delivered Lumens per circuit watt	70
Forward Volt	34V
CRI	≥90 CRI

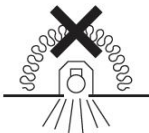
Apply these factors to 3000K for lumen output of other CCTs: 2700K x 0.98 / 3500K x 1.01 / 4000K x 1.02.

Ceiling void minimum depth for driver box: 10.00" (254mm)

Project Ref: _____ Location Ref: _____

Specify fixture part number (All boxes must be filled in to correctly order)

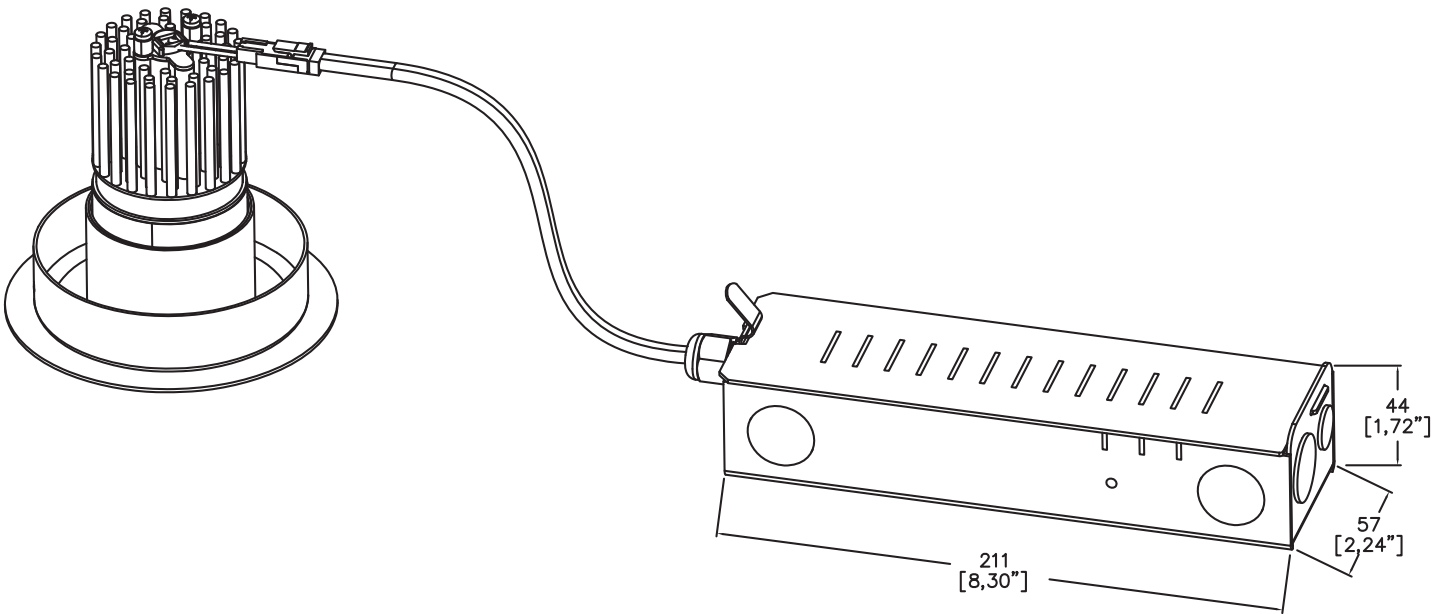
A750+LED-WW				ALED51/Q-HO		WFL	ALEZ1-120-277		
Finish _____									
WH White									
BK Black									
RAL Custom*									
ABR1 Antique Brass									
ABZ1 Antique Bronze									
PCH1 Polished Chrome									
PNK1 Polished Nickel									
PBR1 Polished Brass									
Installation _____									
TR Installation kit with overlap flange									
PC Mud-in kit for seamless flush finish									
Location _____									
DP Damp									
WT Wet									
Supplied for dry location as standard									
LED Type _____									
ALED51/Q-HO LED50 ONE Quantum High Output									
CCT _____									
27 2700K									
30 3000K									
35 3500K (1)									
40 4000K (1)									
(1) contact Lucent for availability									
Beam Angles _____									
WFL Wide Flood									
EasyFit _____									
ALEZ1-120-277 Lucent EasyFit 120-277V									
Dimming Protocol _____									
SLA EldoLED Analog (0-10V) (0.1% Dimming)									
ECA EldoLED Analog (0-10V) (1% Dimming)									
SLD EldoLED DALI (0.1% Dimming)									
ECD EldoLED DALI (1% Dimming)									
PTB15 ERP PTB 0-10V/Phase (1% Dimming) (PHASE ONLY 120V)									
FTX15 Hatch Foundation 0-10V/Phase (1% Dimming)									
Contact Lucent factory for Lutron LED Driver options									
Louvre/Lens _____									
XX Not required									
LL45 Honeycomb									



NIC - No contact with insulation

Ceiling void minimum depth for driver box: 10.00” (254mm)

Fixture and EasyFit driver box



Installation Kits



Installation kit with overlap flange



Mud-in kit for seamless flush finish

Ceiling void minimum depth for driver box: 10.00" (254mm)

Finish selection



Antique Brass



Antique Bronze



Polished Brass



Polished Nickel

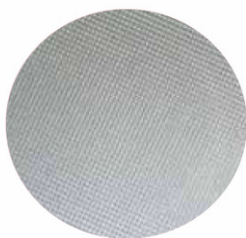


Polished Chrome

Accessories



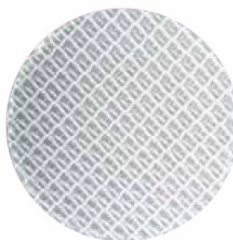
Honeycomb Louvre



Diffusing Lens



Frosted Lens



Heavy Spread Lens



Linear Spread Lens

Technical Details

*Custom RAL code must be specified. Custom RAL colours can increase prices and lead times

Dimming. Whilst Lucent can offer the majority of its luminaires with various dimming options, it remains the responsibility of the specifier/installer to check and ensure compatibility of any control equipment used. Additional cabling may be required depending on the dimming protocol specified.

^ Depth indicated is the minimum recess depth for the driver to be installed through the luminaire cut out.

First Fix Requirement. Luminaire comprised of fixture body with ceiling trim and installation kit, which is to be fitted into the ceiling once finished. Ensure correct alignment of the installation kit before final assembly (see luminaire installation instructions for details)

Location. Tested from underside of the ceiling

It is the policy of Lucent Lighting to continually review and improve its products and therefore reserve the right to change any details of product or withdraw specifications without prior notice.

This specification sheet supersedes all previous versions.

All intellectual property rights pertaining to the product described above and to this document are owned by or licensed to Lucent Lighting Ltd.

We reserve the right to take whatever action is necessary to protect those intellectual property rights.

Please notify Lucent Lighting Ltd of any inaccuracies immediately. E&OE

